



GIS

DIFFERENTIATORS

Small Business
UEI: J337Y8MR4P71
CAGE Code: 6P3E2

NAICS CODES

541620 541690
115310 541720
541360 541990

DOT PRE-QUALIFIED

NC TX
AL TN
GA

INDUSTRIES WE SERVE



TRANSPORTATION



ENERGY &
UTILITIES



FEDERAL, STATE,
TRIBAL, & LOCAL
GOVERNMENT



LAND
DEVELOPMENT



ENVIRONMENTAL
CONSULTING



HISTORICAL
PRESERVATION

TerraXplorations, Inc.

OUR SERVICES

- Federal & state compliance reviews
- Data analysis & integration
- Data visualization & communication
- Data management
- Graphics production
- Mapping
- Survey planning
- Probability models
- Viewshed analysis
- Georeference historic maps and aerial images

GIS Applications

- Archaeological site investigations
- Historic preservation planning
- Cultural landscape analysis
- Tribal heritage documentation



WHY CHOOSE US?

Experienced Professionals: Our team includes seasoned GIS specialists with extensive knowledge of pre-Contact and historic sites across diverse regions.

Cutting-Edge Technology: We integrate state-of-the-art technologies such as GPS mapping and GIS analysis to enhance fieldwork accuracy and reporting.

Tailored Solutions: We work closely with clients to design project-specific strategies that ensure regulatory compliance while meeting development timelines.

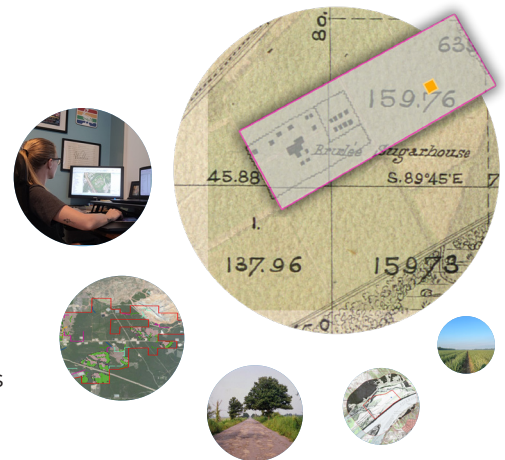
Commitment to Stewardship: We treat every site with care, respecting its cultural significance and ensuring that vital historical narratives are preserved.

OUR VALUES

✓ Helping our clients through the cultural resources process

★ Doing the best job in every situation

↗ Advancing our employees



PROJECT EXAMPLES

County-Wide Survey

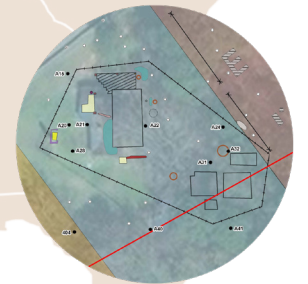
Aided in the identification and mapping of over 500 historic resources in a rural county in Florida.

Military Installation Research

Conducted research of cultural resource GIS databases to aid military installation monitoring program.

Survey Planning and Graphics Production

Pre-plotted shovel tests for hundreds of cultural resource surveys and produced clear, high-quality graphics for reporting.



CONTACT

Let us help you navigate your project's cultural resource requirements.

Phone: 205.799.5638

Email: pdjackson@terraxplorations.com

Website: www.terraxplorations.com